

Dickenson County Public Schools

RVES New Classroom Addition & Sandlick ES Demolition

A large-scale construction project is underway at Dickenson County Public Schools. The image shows a multi-story building with a dark, textured facade that appears to be in the process of being demolished or renovated, with significant portions of the exterior cladding missing, revealing the underlying structure. A bright green vertical strip of material is visible on one section of the building. In the foreground, a large, rectangular concrete foundation for a new addition is visible, surrounded by a network of rebar. The ground is covered in dark gravel and dirt, with orange survey flags marking specific points. In the background, a yellow excavator is visible, and a line of trees marks the horizon under a blue sky with scattered clouds.

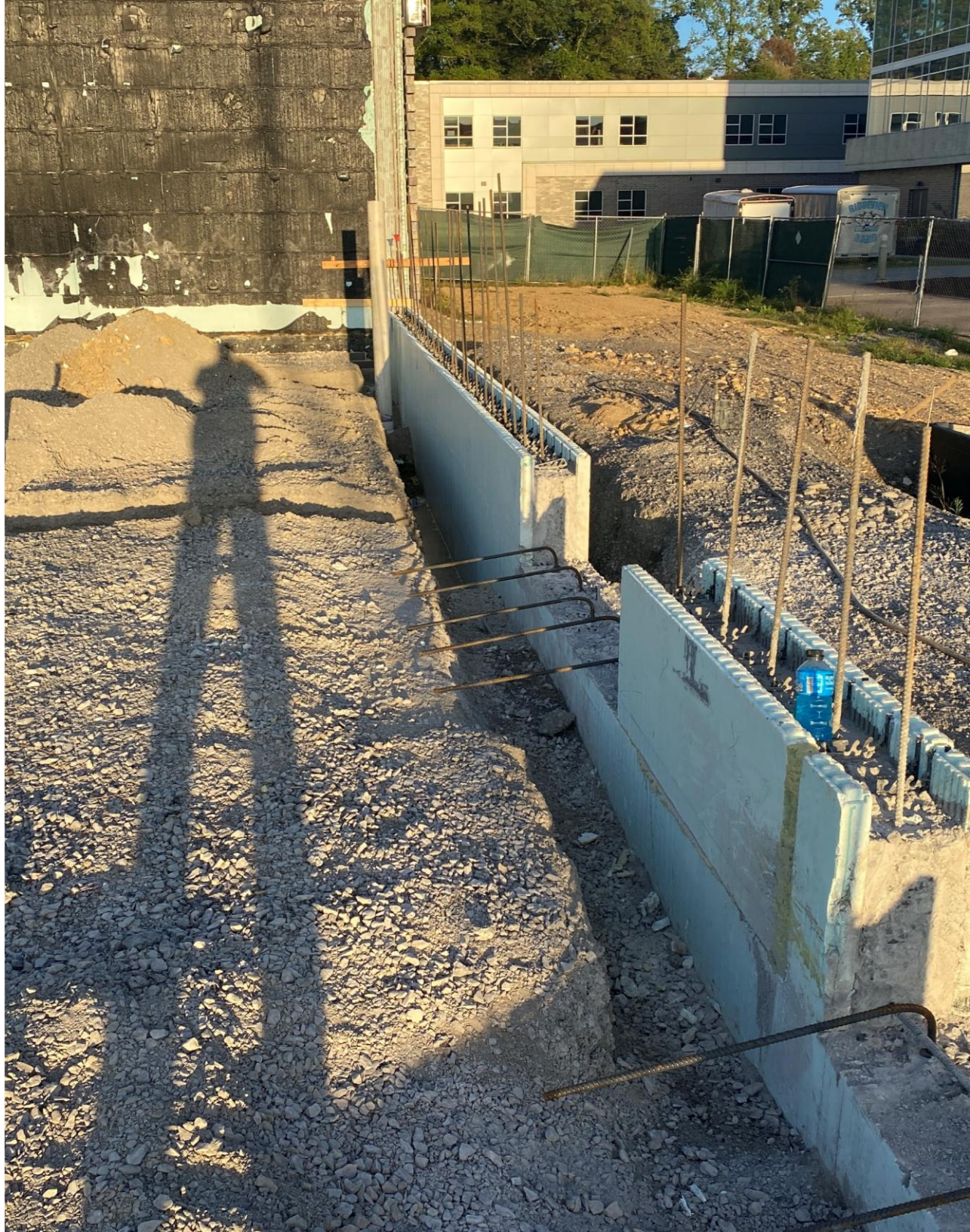
Progress Report
September 2023

SKANSKA

RVES New Addition

Construction Progress:

- Completed building pad
- Completed foundation footings
- Installing ICF and pouring concrete
- Under-slab plumbing rough-in completed and inspected
- Prepping for slab pour



RVES New Addition

Budget & Procurement:

- Planning for furniture is in progress
- Low voltage cabling procurement in progress
- Procurement of phones, interactive boards and other classroom technology in progress
- Project remains within budget





RVES New Addition Progress Photos

SKANSKA



SKANSKA





SKANSKA



SKANSKA

Sandlick ES Demo

Demolition Progress:

- Contractor mobilized on site in mid-September
- Asbestos abatement started this month and is ongoing
- Demolition to begin upon completion of abatement

Budget & Procurement:

- Demolition/abatement contract signed in August
- Abatement monitoring services obtained this month
- Project remains within budget





Sandlick ES Demolition Progress Photos

SKANSKA





